

5001-5007 Suitland Road, Suitland, MD 20746

Addresses: 5001-5007 Suitland Rd
Suitland, MD 20746

Land Size: 3.9-acre assemblage

- 5001 Suitland Rd: 0.55 acres
- 5005 Suitland Rd: 2.84 acres
- 5007 Suitland Rd: 0.51 acres

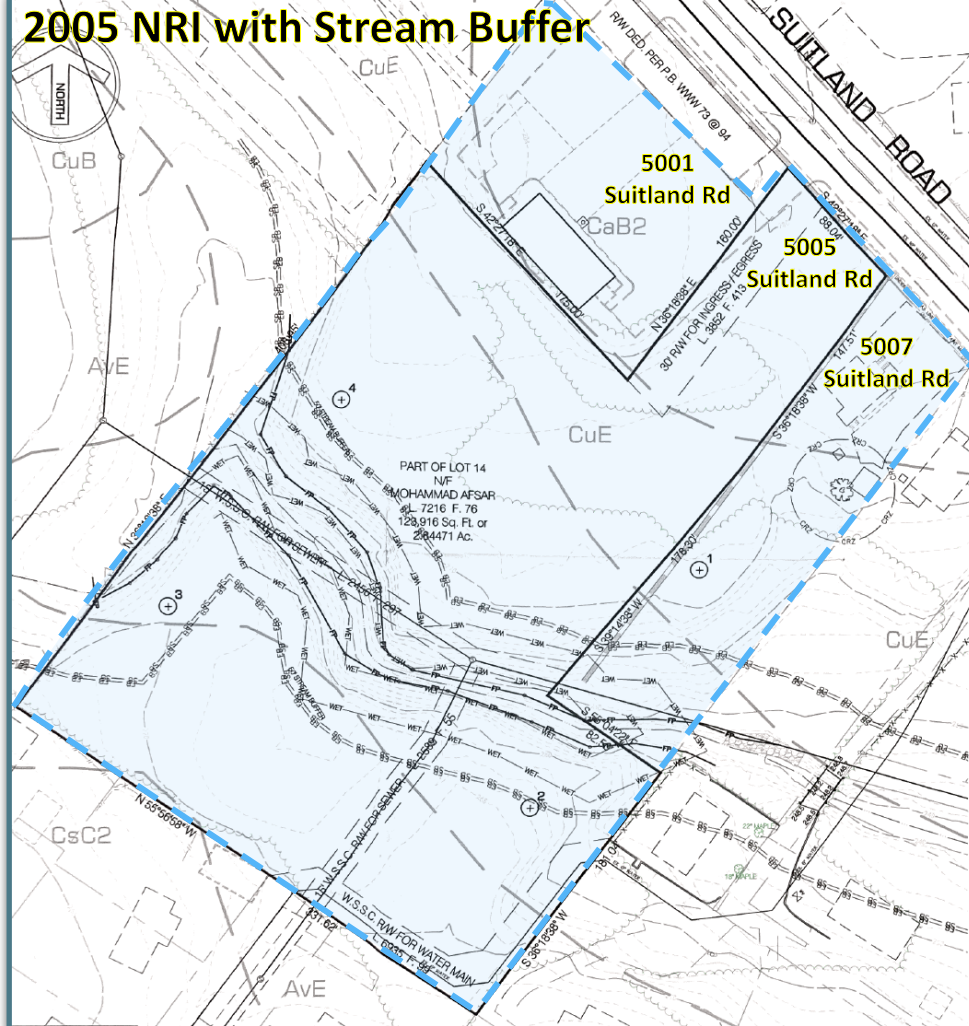
Zoning: LMUTC

(Legacy Mixed-Use Town Center)
Allows mixed commercial
residential developments up to
60 units per acre

Location:

0.75 miles to Suitland Metro Station
0.5 miles to Suitland Federal Center

Located within a 2023
Qualified Census Tract (QCT)



Adam Stein

Managing Partner, [BridgeWater Real Estate Brokerage](#)

(202) 603-5587

astein@bwreb.com | [LinkedIn](#)

5001-5007 Suitland Road, Suitland, MD 20746

Special Features:

- **TIF District:** may qualify for infrastructure (parking lot/garage) to be paid for by bonds and repaid through future real estate taxes
- **Revitalization Tax Credits:** may receive an abatement for the new increased real estate taxes on a sliding scale from 100% to 33% over a 3-year span
- **Qualified Census Tract (QCT):** 2023 designated
- **PILOT:** for affordable housing developments

Nearby Developments:

- Town Square at Suitland Federal Center
- \$227M Suitland High School
- Suitland Federal Center
- Adjacent to NVR's 59-unit single family housing development which should break ground in late summer or early fall.



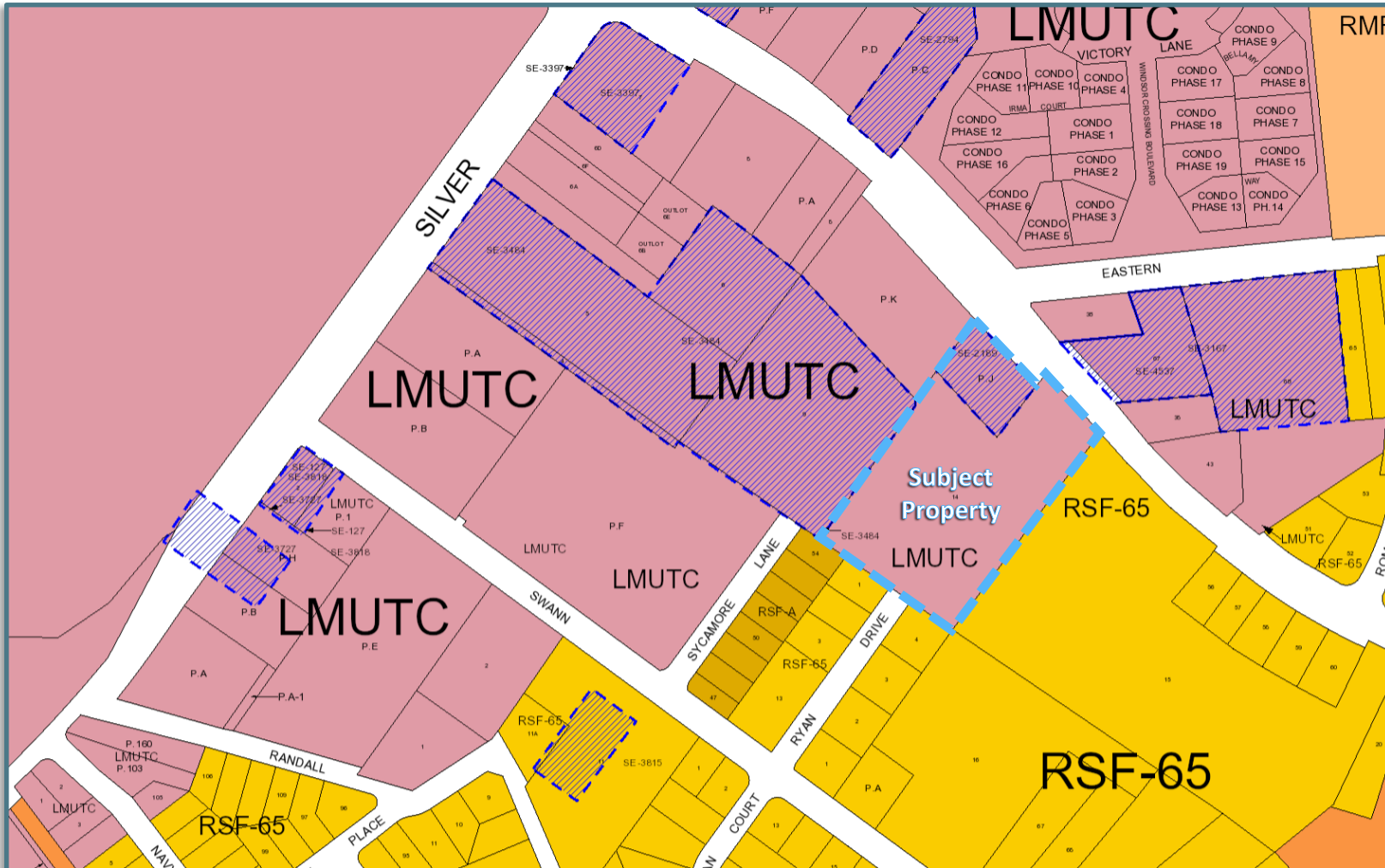
Adam Stein

Managing Partner, [BridgeWater Real Estate Brokerage](#)

(202) 603-5587

astein@bwreb.com | [Linked In](#)

5001-5007 Suitland Road, Suitland, MD 20746



For more information

CONTACT US

Adam Stein

Managing Partner

BridgeWater Real Estate Brokerage

astein@bwreb.com

(202) 603-5587

6851 Oak Hall Lane
Suite 300
Columbia, MD 21045



Adam Stein

Managing Partner, [BridgeWater Real Estate Brokerage](#)

(202) 603-5587

astein@bwreb.com | [LinkedIn](#)